

Chem 41c Quiz 4

Stoltz, Spring 2011

May 6, 2011

Due May 6, 2011 10:00 AM

You have 30 min to take this quiz. It is closed note, closed book, and no collaboration is allowed. Please do not discuss the quiz with anyone until you receive it back graded. Place a box around your answers. There is no partial credit. The quiz is worth 25 out of 20 points.

Name_____

Chem 41c Quiz 4

Quiz Grade _____

Stoltz, Spring 2011

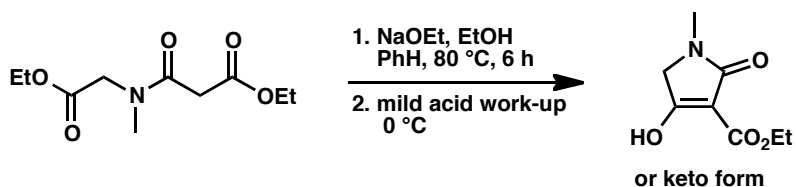
May 6, 2011

Due May 6, 2011 10:00 AM

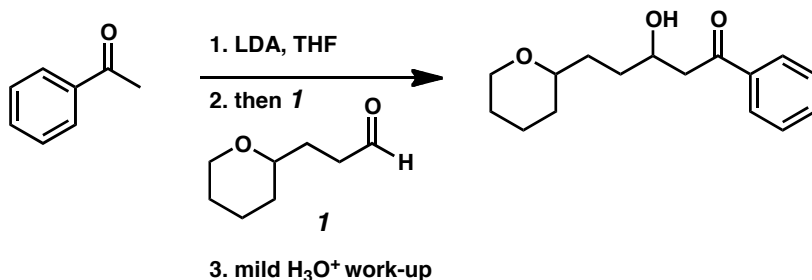
You have 30 min to take this quiz. It is closed note, closed book, and no collaboration is allowed. Please do not discuss the quiz with anyone until you receive it back graded. Place a box around your answers. There is no partial credit. The quiz is worth 25 out of 20 points.

Predict the products of each reaction. (5 points each)

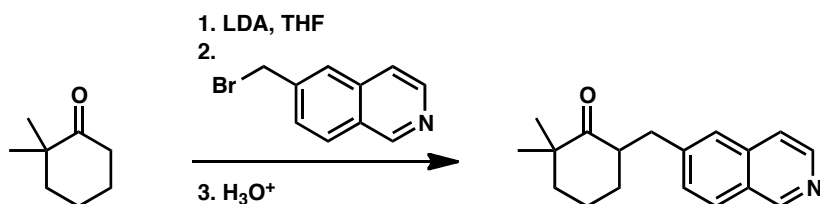
1.



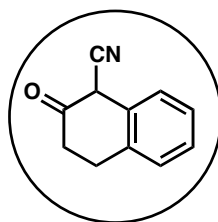
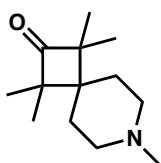
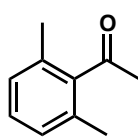
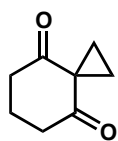
2.



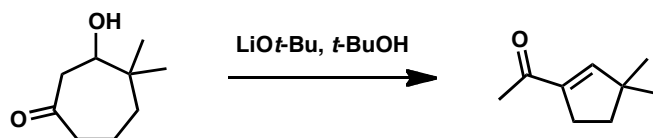
3.



4. Choose the compound with the most acidic proton.



5. Provide a plausible mechanism for the following transformation (TA's will give partial credit).



<http://www.ktf-split.hr/periodni/en/>

LANTHANIDE

Copyright © 1998-2002 EniG. (eni@kf-split.hr)

(1) Pure Appl. Chem., 73, No. 4, 667-683 (2001)

Relative atomic mass is shown with five significant figures. For elements having no stable nuclides, the value enclosed in brackets indicates the mass number of the longest-lived isotope of the element.

However three such elements (Th, Pa, and U) do have a characteristic terrestrial isotopic composition, and for these an atomic weight is tabulated.

ACTINIDE

Editor: Aditya Vardhan (adivar@netlinx.com)